

Level 3 Courses



ART



BTEC NATIONAL DIPLOMA IN ART AND DESIGN

3

WHAT WILL YOU BE LEARNING?

This programme is designed to provide you with a work-related qualification across a wide variety of art and design specialisms. It has been developed to help you prepare for employment or higher education. This programme is based in our exciting Art department and provides opportunities for working with a wide range of materials and disciplines.

WHO CAN DO IT?

Entry requirements: 5 GCSEs (grade A*-C).

WHAT CAN I GO ON TO DO AFTER THE COURSE?

The programme is ideal for you if you wish to pursue a career or further study in art, design and media based work. The Level 3 National Award, Certificate and Diploma are equivalent to A Level qualifications for entry into higher education.



BUSINESS



BUSINESS LEVEL 3 OCR NATIONALS

3

WHAT WILL YOU BE LEARNING?

The OCR Level 3 Nationals in Business contain three types of qualifications, each one building on the previous.

- * To achieve the Certificate, you must achieve a total of six units consisting of four mandatory units and two optional units.
 - * To achieve the Diploma you must complete a total of 12 units consisting of four mandatory units and eight optional units.
 - * To achieve the Extended Diploma, you must complete a total of 18 units consisting of four mandatory units and 14 optional units.
- If you are looking for a career in business and want to develop skills and understanding that is directly relevant to the business world, then these qualifications are for you. Units you will study include:

Investigating business, Customer service, Business communications, Finance for business and specialist units from Law, Marketing, Sales and Distribution, Finance and Human Resources. This course requires students to build up a portfolio of assessments and so if you do not like examinations it may well be for you!

WHO CAN DO IT?

Entry requirements: 5 GCSEs (grade A*-C).

WHAT CAN I GO ON TO DO AFTER THE COURSE?

This course offers you a specialist qualification for working in areas of business. It could lead onto other qualifications such as a degree, or Higher Diploma, in a Business related course. With further training, you could go into a job related to business such as a Business Administrator, Customer Service Agent, or Finance Assistant. The course also provides you with the business knowledge, understanding and skills that many employers are looking for, especially in areas of business such as Marketing or Human Resources.





BUSINESS STUDIES AS LEVEL

3

WHAT WILL YOU BE LEARNING?

This course encourages candidates to develop a critical understanding of organisations, the context in which they operate, the markets they serve and the process of adding value through a problem solving approach to study. The opportunity to pursue an area of particular interest exists within the overall framework as you will concentrate on particular aspects of Business towards the end of the course. This course is assessed by external examination.

WHO CAN DO IT?

Entry requirements: 5 GCSEs (grade A*-C).

WHAT CAN I GO ON TO DO AFTER THE COURSE?

You could take this course to complement other advanced level courses or to prepare for the A2 part of an Advanced GCE in Business, which could lead onto higher education in areas of Finance, Marketing or Human Resources or more general higher education courses. With further training and qualifications, you could go into a job in Business Management. You could also go straight into employment as the AS GCE is a recognised qualification, which will help you to develop the basic skills, understanding and knowledge that many employers across lots of industries are looking for.

AS ACCOUNTING

3

WHAT WILL YOU BE LEARNING?

This course provides an introduction to the concepts and principles that underlie accounting theory and practice; and expands their application to a range of accounting situations. It provides a discrete package of material, providing you with a knowledge and understanding of accounting principles and techniques applicable to the business environment should you not wish to progress to A2. This course is assessed by external examinations.

WHO CAN DO IT?

Entry requirements: 5 GCSEs (grade A*-C) including a C grade in Mathematics.

WHAT CAN I GO ON TO DO AFTER THE COURSE?

You could take this course to complement other advanced level courses or to prepare for the A2 part of an Advanced GCE in Accountancy, which could lead onto higher education in areas of finance, accounting, mathematics or more general higher education courses. With further training and qualifications, you could go into a job related to accounting such as an Accountant. You could also go straight into a job as the AS GCE is a recognised qualification, which will help you to develop the basic skills, understanding and knowledge that many employers across lots of industries are looking for.



AS TRAVEL AND TOURISM

3

WHAT WILL YOU BE LEARNING?

You will enjoy the course if you would like to develop an appreciation for the diversity and complexity of the travel and tourism industry, practical and technical skills relevant to the occupational sector and an understanding of the issues that are affecting the industry.

You are also likely to enjoy the course if you like to work independently, researching and constructing your own portfolios of work. There will also be an emphasis on developing practical skills associated with working in the travel and tourism industry and learning from real life examples from the world of work.

In the AS units you can learn about; The Travel and Tourism Industry, The Travel and Tourism Customer, Destination Europe, Destination Britain, Travelling Safely, Resort Operations, Assessment on the programme is by a combination of examination and portfolio work.

WHO CAN DO IT?

Entry requirements: 5 GCSEs (grade A*-C).

WHAT CAN I GO ON TO DO AFTER THE COURSE?

The GCE in Travel and Tourism qualifies for UCAS points so if you complete it successfully you could move on to study for a degree or BTEC Higher National Certificate or Diploma in a related subject. You could progress to Modern Apprenticeships in Travel Services or to relevant employment in this exciting industry. The qualification would also provide a valuable component in whatever combination of qualifications you select to study in preparation for Higher Education or employment.



AS ENGLISH LITERATURE

3

WHAT WILL YOU BE LEARNING?

Students will be completing 2 units. Unit 1 is entitled: Texts in Context. The course will focus on WWI Literature. Students will study 3 texts from each genre in detail plus 3 texts focusing on their wider reading. The exam will consist of a 2 hour assessment in which students will answer two questions. One question is to focus on poetry and the other linked to the specified theme. This represents 60% of the final mark at AS.

Unit 2 is entitled 'Creative Study'. This assesses set prose and drama texts and consists of a 2,000 word coursework folder containing 2 pieces of writing.

WHO CAN DO IT?

Entry requirements: 5 GCSEs (grade A*-C) including a C grade in English.

WHAT CAN I GO ON TO DO AFTER THE COURSE?

You could take this course to complement other advanced level courses or to prepare for the A2 part of an Advanced GCE in English Literature, which could lead onto higher education in English related studies or more general higher education courses. With further training, you could go into a job related to English Literature such as a Teacher, Journalist, Author or Poet. You could also go straight into a job as the AS GCE is a recognised qualification that will help you develop the skills, understanding and knowledge that many employers across lots of industries are looking for.

AS MEDIA STUDIES

3

WHAT WILL YOU BE LEARNING?

This subject offers you the opportunity to combine an understanding of the mass media in society and methods for analysing media texts (e.g. television programmes, films, advertising, and the press) with the development of practical skills for media production. The balance of theory and practical work means that you will learn about how media industries operate research and investigate issues and debates about the role of the media in society, analyse texts from a variety of media and produce texts of your own.

WHO CAN DO IT?

Entry requirements: 5 GCSEs (grade A*-C) including a C grade in English.

WHAT CAN I GO ON TO DO AFTER THE COURSE?

You could take this course to complement other advanced level courses such as English or to prepare for the A2 part of an Advanced GCE in Media Studies, which could lead onto higher education to study Media, related courses within the Arts, or more general higher education courses. With Further training, you could go into a job related to media such as a Journalist, News Reporter, TV Producer and Public Relations Officer. You could also go straight into a job as the AS GCE is a recognised qualification that will help you develop the skills, understanding and knowledge that many employers across lots of industries are looking for, especially in the media and Communication sectors.



Health and Social Care



CHILD CARE CACHE LEVEL 3

3

WHAT WILL YOU BE LEARNING?

This qualification prepares you to work in an unsupervised capacity, with children and their families in a variety of settings and environments. The course covers the development of children from conception to 16 years. It has a wide range of choices and option units to give you the opportunity to expand your career choices. The award is split into 3 stages which allow you to progress and study units which support competent practice. The units cover: Introduction to working with children; Development; Supporting and keeping children safe and the principles underpinning the role of the practitioner working with children. Students who continue with the Diploma will be able to select optional units of study by negotiation. Work experience, in a variety of settings, is an integral part of this course.

WHO CAN DO IT?

Entry requirements: 5 GCSEs (grade A-C).

WHAT CAN I GO ON TO DO AFTER THE COURSE?

You can use the Diploma qualification to work as an Early Years Practitioner in a number of settings; move into areas such as children's nursing, general nursing and midwifery; enter university or continue to study for a Foundation Degree or other Professional Qualification within the workplace. Depending on your other qualifications, you could also progress onto a teacher training course.

BTEC NATIONAL IN HEALTH AND SOCIAL CARE – LEVEL 3

3

WHAT WILL YOU BE LEARNING?

If you are looking for a career in health, social care and early years this could be the qualification for you. This course will give you the opportunity to be able to build your skills, knowledge and understanding of health, social care and early years and be able to specialise in a particular area. You will develop the ability to work autonomously and effectively whilst obtaining a qualification that is relevant to the workplace. There are 4 mandatory units - students then choose additional units, 2 to achieve the Award, 8 for the Certificate and 14 for the Diploma. Students will be expected to complete 100 hours of Work Experience in a variety of settings which will be negotiated.

WHO CAN DO IT?

Entry requirements: 5 GCSEs (grade A*-C).

WHAT CAN I GO ON TO DO AFTER THE COURSE?

Opportunities following on from this course include working in the health, social care and early years sectors as a trainee; college or university entry for further study and other work-related and occupational qualifications in health, social care and early years.



HUMANITIES



AQA GCE (AS/A2) CITIZENSHIP STUDIES

3

WHAT WILL YOU BE LEARNING?

The course is made up of four units – two studied in each year. For the AS course you will study Unit 1: Identity, Rights and Responsibilities (covering subjects such as Britishness, Diversity, Discrimination, Human Rights and Civil and Criminal Law) and Unit 2: Democracy, Active Citizenship and Participation (covering subjects such as Political, Economic and Media power, How citizens and institutions can make a difference and Active Citizenship). For the A2 course, you will study Unit 3: Power and Justice (Crime, Sentencing, Elections and How the UK is governed) and Unit 4: Global Issues and Making a Difference (covering subjects such as Universal Human Rights and Human Rights Abuses, Conflict and Resolution, Trade and Environmental Issues).

WHO CAN DO IT?

Entry requirements: 5 A*-C GCSE grades (preferably including Citizenship)

WHAT CAN I GO ON TO DO AFTER THE COURSE?

An A-Level in Citizenship Studies will build on the learning achieved at GCSE to communicate different views, ideas and perspectives; support, negotiate, plan, make decisions and take action on citizenship issues; select, interpret, analyse and evaluate information to construct reasoned and coherent arguments, make decisions, propose alternative solutions and form conclusions; work with others, using problem solving and critical approaches to the issues, problems and events.

AS CRITICAL THINKING

3

WHAT WILL YOU BE LEARNING?

This course enables you to develop your ability to interpret, analyse and evaluate ideas and arguments. You will be encouraged to judge the quality of the argument presented in support of a belief, or a course of action.

WHO CAN DO IT?

Entry requirements: 5 A*-C GCSE grades

WHAT CAN I GO ON TO DO AFTER THE COURSE? You could take this course with other advanced level courses to prepare for higher education in areas of critical thinking, social sciences or more general higher education courses.

AS ECONOMICS

3

WHAT WILL YOU BE LEARNING?

At AS, candidates investigate present day situations in our economy and try to explain why things happen and what might happen in the future. Issues such as: 'Why are house prices falling so fast?', 'Why is petrol so expensive?' and 'Should governments interfere with Money markets?' We also look at issues that cover the whole economy which include: 'Why does the government have an inflation rate target and how does it affect us?', 'What happens to the economy if people decide to spend more?' and 'How are we affected by the growth of the Chinese and Indian economies?' The AS course is assessed as two units which are written papers of 1 hour and 15 minutes, each consists of a multiple choice section and a data question with two options.

WHO CAN DO IT?

Entry requirements: 5 GCSEs (grade A*-C) preferably including a grade C in English.

WHAT CAN I GO ON TO DO AFTER THE COURSE?

The subject leads to entry to Higher Education courses in either Economics or related subjects, such as Business or Law. Employment opportunities with this subject are very good in banking or any finance related profession.

AS GEOGRAPHY

3

WHAT WILL YOU BE LEARNING?

Geography is a subject that is constantly changing with events that take place within the world today. Throughout the AS Level course you will study human geography, physical geography and produce a geographical investigation. Topics of study during the AS course will be population and development, settlement dynamics, economics activity and change, coastal systems and people, landform systems and people and atmospheric systems and people. Geography can be used as a qualification to gain entry into Higher Education for a range of courses and into careers with local government, the media, environmental organizations and planning.

WHO CAN DO IT?

Entry requirements: 5 GCSEs (grade A*-C).

WHAT CAN I GO ON TO DO AFTER THE COURSE?

This subject leads to entry into Higher Education courses in many areas of Environmental Studies, Planning, applied Geography and related professions. It is also a developing area of expertise in all aspects of the Sustainable Environment.

AS HISTORY

3

WHAT WILL YOU BE LEARNING?

AS History is an exciting and challenging subject that will broaden students minds and increase their analytical skills. The subject is divided into 2 units. The first looks at the "people's tragedy" that took place in Russia between 1881 and 1953; examining the Revolution, Lenin, Stalin and Russia's experiences in the two World Wars. Unit two follows on neatly from the Medicine unit studied at GCSE, as it examines the Government's attitude towards the extreme poverty that many faced in British cities between 1830 and 1875. Students who choose History often find that it combines well with Government and Politics and Sociology.

WHO CAN DO IT?

Entry requirements: 5 GCSEs (grade A*-C) preferably including a grade C in English.

WHAT CAN I GO ON TO DO AFTER THE COURSE?

History AS level can lead to careers in law, journalism, teaching and a variety of other careers that value the ability to analyse information, and express supported opinions. It is also valued as a subject for entry into numerous university courses.

AS SOCIOLOGY

3

WHAT WILL YOU BE LEARNING?

We tend to believe what we are told about what goes on around us in society - by newspapers, TV, Radio, or by parents. There is so much that we simply take for granted - without questioning it. Sociology exists to challenge our taken-for-granted assumptions: to question whether things are really the way they appear to be. The issues that interest sociologists tend to fall into particular groups - and these groups make up the subject areas covered by the A/AS Level course. For example: Why do single women tend to be successful, healthy and well balanced, while single men suffer more ill health, mental illness and unemployment than other groups? What does this tell us about the effects of families of the individual? - FAMILIES AND HOUSEHOLDS. Is your success in the educational system purely a result of your ability and effort - or do your gender, class background or ethnicity play a crucial role? What does "intelligence" mean? How important is it in determining your future? - SOCIOLOGY OF EDUCATION. At both AS and A2 students receive an in-depth grounding in sociological research techniques, including survey methods, questionnaires, interviewing and observation. This is the only A Level programme to offer full in-depth study and practice of these techniques. The skills acquired would prove invaluable to anyone undertaking coursework / research in other subject areas, either at A Level or in Higher Education. Nationally, Sociology is one of the most popular A/AS Level subjects. This reflects the subject's versatility and wide acceptability as a qualification

WHO CAN DO IT?

Entry requirements: 5 GCSEs (grade A*-C) preferably including a grade C in English.

WHAT CAN I GO ON TO DO AFTER THE COURSE?

People who study sociology go on into a wide variety of jobs. You will gain a range of very valuable skills. You will learn how to work independently. You will learn how to find information, extract what is important from it and turn it into an argument. The course will include exercises in team working, so you will learn work in collaboration with others, but also how to work effectively without close supervision. You will learn how to generate new knowledge and information using a very wide range of tools from through our emphasis on research methods from the large social survey interpreted through statistics, to in-depth interviews, to analysing the language used in media texts or situations like GP surgeries. You will learn to conduct research both with others and on your own.

Take these skills together with your insights into the workings of society and it is not surprising that a very wide range of employers see a sociology degree as highly relevant. Neither is it surprising that Sociology sits very comfortably alongside any other subjects in your qualifications portfolio for university entry. Beyond this many people today study sociology for the personal enrichment it brings them, broadening their minds and enabling them to see their world in new and interesting ways.

AS GOVERNMENT AND POLITICS

3

WHAT WILL YOU BE LEARNING?

AS Government and Politics involves the analysis of the British political system. It deals with the issues that affect your life and the way that the country you live in is run. Amongst other things, you will examine why people vote (and why they don't); how people vote; why political parties exist, when no-one seems to believe what they say; why half of the UK Parliament is unelected and what should be done about it. Politics is a subject that values opinion and debate; if you have strong opinions and can express them well, then it could well be the subject for you. Politics combines well with Sociology, History or Economics.

WHO CAN DO IT?

Entry requirements: 5 GCSEs (grade A*-C) preferably including a grade C in English.

WHAT CAN I GO ON TO DO AFTER THE COURSE?

Politics AS level can lead to a career in politics (local or national). It can also lead to careers in areas such as journalism or law.

AS PSYCHOLOGY

3

WHAT WILL YOU BE LEARNING?

Psychology is the scientific study of the human mind and behaviour. This course provides a general introduction to Psychological theories, research, studies and methods and aims to develop analytical, interpretation and evaluation skills. Students also learn how to design and report Psychological investigations, and analyse and interpret data. The course also enables students to develop an understanding of ethical issues in Psychology. In addition, the course aims to encourage students to appreciate how society makes decisions about scientific issues and how the sciences contribute to the success of the economy and society.

WHO CAN DO IT?

Entry requirements: 5 GCSEs (grade A*-C) preferably including a grade C in English.

WHAT CAN I GO ON TO DO AFTER THE COURSE?

You could take this course to complement other advanced level courses such as a science or to prepare for the A2 part of an Advanced GCE in Psychology, which could lead you onto higher education to study Psychology or more general higher education courses.

With further training, you could go into a job related to Psychology and people such as a Counsellor, Nurse or Psychologist.

You could also go straight into a job as the AS GCE is a recognised qualification that will help you develop the skills, understanding and knowledge that many employers across lots of industries are looking for.



ICT



AS INFORMATION TECHNOLOGY

3

WHAT WILL YOU BE LEARNING?

This specification encourages candidates to become discerning users of ICT, developing a broad range of ICT skills and knowledge and understanding of ICT. This should form a basis for progression into further learning, including progression from AS to A2, and/or employment. Specifically, it encourages candidates to develop:

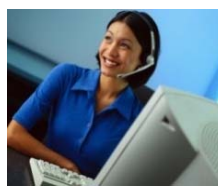
- the capacity for thinking creatively, innovatively, analytically, logically and critically;
- the skills to work collaboratively;
- the ability to apply skills, knowledge and understanding of ICT in a range of contexts to solve problems;
- an understanding of the consequences of using ICT on individuals, organisations and society and of social, legal, ethical and other considerations on the use of ICT;
- an awareness of emerging technologies and an appreciation of the potential impact these may have on individuals, organisations and society.

WHO CAN DO IT?

Entry requirements: 5 GCSEs (grade A*-C).

WHAT CAN I GO ON TO DO AFTER THE COURSE?

This specification provides a suitable foundation for the study of ICT or a related area through a range of higher education courses vocational courses (e.g. Information Technology, Information Systems, Business Computing) or direct entry into employment. In addition, the specification provides a coherent, satisfying and worthwhile course of study for candidates who do not progress to further study in this subject.



ICT PRACTITIONERS BTEC NATIONAL

3

WHAT WILL YOU BE LEARNING?

The BTEC National Certificate provides a specialist work related programme of study that covers the key knowledge and practical skills required in the appropriate vocational sector. The BTEC National Certificate offers flexibility and a choice of emphasis through the specialist units. It is broadly equivalent to two GCEs or the full award AVCE. The qualification offers an engaging programme for those who are clear about the area of employment that they wish to enter. These learners may wish to extend their programme through the study of a related GCE, a complementary NVQ or another qualification. These learning programmes can be developed to allow learners to study complementary qualifications without duplication of content.

WHO CAN DO IT?

Entry requirements: 5 GCSEs (grade A*-C).

WHAT CAN I GO ON TO DO AFTER THE COURSE?

On successful completion of this nationally recognised vocational qualification you can enter employment in the IT sector or progress to higher education vocational qualifications such as the Edexcel BTEC Higher National in Computing

iMEDIA LEVEL 3 CERTIFICATE

3

WHAT WILL YOU BE LEARNING?

The OCR Level 3 Certificate/Diploma for iMedia Users has been developed in consultation with partners in industry, further education and schools. It has been designed as a route into, or further development of skills in, a wide range of job roles within the dynamic interactive media industry. The purpose of this qualification is to develop candidates' skills in the use of applications to plan a solution against a specification and provide a product or service to meet their customers' needs. It will be appropriate to those working as, or preparing to work as: web designers, graphic artists, multimedia producers, animators, sound designers and editors, video producers, games designers and story boarders. In order to achieve a Level 3 Certificate, candidates are required to achieve three units, the mandatory unit plus two optional units. The optional units allow candidates to develop skills in a range of different applications. In order to achieve a Level 3 Diploma, candidates are required to achieve five units, the mandatory unit plus four optional units.

WHO CAN DO IT?

Entry requirements: 5 GCSEs (grade A*-C).

WHAT CAN I GO ON TO DO AFTER THE COURSE?

You can progress to a higher level qualification in the subject or seek further training or employment in a variety of jobs such as web designers, graphic artists, multimedia producers, animators, sound designers and editors, video producers, games designers and story boarders.

WHAT WILL YOU BE LEARNING?

The Microsoft IT Academy program is an exciting new qualification launched at the Marsh Academy. It is a complete technology training solution for both our staff and students that includes a coordinated curriculum, courseware and online collaboration tools to help them achieve certification in Microsoft technologies. Microsoft Office Specialist is the official Microsoft Office certification for desktop productivity. Expert level certifications are offered for Word and Excel. Exams are available for Office 2007. Both the level 2 and 3 courses can be taken in conjunction with CLAIT and the OCR Level 3 Diploma.

WHO CAN DO IT?

Entry requirements: No formal entry requirements, however all students need to have a keen interest in the subject and have a desire to learn. All students will be interviewed.

WHAT CAN I GO ON TO DO AFTER THE COURSE?

This specification provides a suitable foundation for the study of ICT or a related area through a range of higher education courses vocational courses (e.g. Information Technology, Information Systems, Business Computing) or direct entry into employment. In addition, the specification provides a coherent, satisfying and worthwhile course of study for candidates who do not progress to further study in this subject.



AS FRENCH

WHAT WILL YOU BE LEARNING?

Foreign Languages are more and more important as the nations' economy faces an international future. Fluency in a language is valued by employers and enhances job opportunities. A foreign language also complements your qualifications and is useful in any profession where you have contact with people.

WHO CAN DO IT?

Entry requirements: 5 GCSEs (grade A*-B).

WHAT CAN I GO ON TO DO AFTER THE COURSE?

You could take this course to complement other advanced level course or to prepare for the A2 part of an Advanced GCE in French, which could lead onto higher education in French, Languages or more general higher education courses. With further training, you could go into a job related to French or Languages such as a Teacher, Translator, or you may wish to use your French to study or work over in France.

You could also go straight into a job as the AS GCE is a recognised qualification that will help you develop the skills, understanding and knowledge that many employers across lots of industries are looking for, especially in the travel and tourism sector.

AS SPANISH

WHAT WILL YOU BE LEARNING?

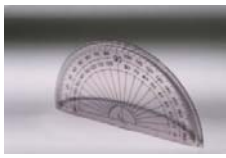
Foreign Languages are more and more important as the nations' economy faces an international future. Fluency in a language is valued by employers and enhances job opportunities. A foreign language also complements your qualifications and is useful in any profession where you have contact with people.

WHO CAN DO IT?

Entry requirements: 5 GCSEs (grade A*-B).

WHAT CAN I GO ON TO DO AFTER THE COURSE?

You could take this course to complement other advanced level course or to prepare for the A2 part of an Advanced GCE in Spanish, which could lead onto higher education in Spanish, Languages or more general higher education courses. With further training, you could go into a job related to Spanish or Languages such as a Teacher, Translator, or you may wish to use your Spanish to study or work over in Spain. You could also go straight into a job as the AS GCE is a recognised qualification that will help you develop the skills, understanding and knowledge that many employers across lots of industries are looking for, especially in the travel and tourism sector.



AS MATHEMATICS

3

WHAT WILL YOU BE LEARNING?

The AS course in Mathematics covers three modules, Core 1, Core 2 and Statistics 1. This can then be taken into a second year A2 course which involves Core 3, Core 4 and Discrete.

WHO CAN DO IT?

Entry requirements: 5 GCSEs (grade A*-C) including at least a grade B in Mathematics.

WHAT CAN I GO ON TO DO AFTER THE COURSE?

It is advisable to do the full 2 year course to gain UCAS points for entry into university but depending on individual students needs to get university places it is possible to do just the AS course and cash in at the end of the first year.



AS PERFORMING ARTS

3

WHAT WILL YOU BE LEARNING?

GCE Performing Arts embraces all the major performance skills relating to Drama and Music including, devising, composing, rehearsing, performance production and working to a commission. Students will gain an understanding of how a performance is realised from both a creative and an administrative and organisational perspective.

The units of work include: Exploring skills for performance, Planning for an event, Performing to a commission. Internal assessment is based on practical skills and portfolio work. External assessment is in the form of a performance assessed by a visiting examiner.

WHO CAN DO IT?

Entry requirements: No formal entry requirements, however all students need to have a keen interest in the subject and have a desire to learn. All students will be interviewed.

WHAT CAN I GO ON TO DO AFTER THE COURSE?

You could take this course to complement other advanced level courses such as English or Media Studies or to prepare for the A2 part of an Advanced GCE in Performing Arts, which could lead on to studying Performing Arts in higher education. With Further training, you could go into a job in the Performing Arts sector, teaching or in community arts industries.



BTEC NATIONAL DIPLOMA IN SPORT

3

WHAT WILL YOU BE LEARNING?

The BTEC National in Sport is a vocational course that specialises in sports development, coaching and fitness. It will improve your understanding of fitness and give you opportunities to coach small groups of children. It is a modular based course equivalent to pursuing 3 A-Levels. All modules are assessed through set assignments that are of a practical nature or use scenarios from sports. Final assessment is on the completion of eighteen units.

WHO CAN DO IT?

Entry requirements: 5 GCSEs (grade A-C).

WHAT CAN I GO ON TO DO AFTER THE COURSE?

After you have successfully completed this course you can progress onto HND / Degree courses in sport related areas.

AS PHYSICAL EDUCATION

3

WHAT WILL YOU BE LEARNING?

The AS level consists of an introduction to Physical Education, which is externally assessed, and acquiring, developing and evaluating practical skills in Physical Education, which is externally set, internally assessed and externally moderated. Together they form 50% of the corresponding four unit Advanced GCE.

WHO CAN DO IT?

Entry requirements: 5 GCSEs (grade A-C).

WHAT CAN I GO ON TO DO AFTER THE COURSE?

After you have successfully completed this course you can progress onto a HND / Degree courses in sport related areas.



BTEC NATIONAL IN PUBLIC SERVICES

3

WHAT WILL YOU BE LEARNING?

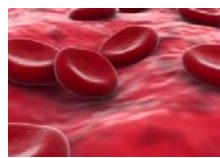
The BTEC Nationals in Uniformed Public Services have been developed in the Public Service sector to focus on: Education and training for Uniformed Public Services employees; providing opportunities for Uniformed Public Services employees to achieve a nationally recognised Level 3 vocationally specific qualification; giving learners the opportunity to gain a nationally recognised vocationally specific qualification, to enter employment in the Public Service sector or to progress to higher education vocational qualifications, such as the Edexcel Level 5 BTEC Higher National in Public Services and giving learners the opportunity to develop a range of skills and techniques; personal skills and attitudes essential for successful performance in working life.

WHO CAN DO IT?

Entry Requirements: 5 GCSEs (grade A-C).

WHAT CAN I GO ON TO DO AFTER THE COURSE?

The course allows students to enter a public service of their choice or the ability to complete the BTEC National Diploma. If students complete another subject they can go on to higher education.



AS BIOLOGY

3

WHAT WILL YOU BE LEARNING?

The Edexcel AS and Advanced GCE in Biology qualifications develop knowledge, understanding and skills related to biology. It has been designed to motivate students by helping them to realise how an understanding of many of today's contemporary issues requires the knowledge and understanding of underpinning biological principles. Students cover the AS and the Advanced GCE subject material in compulsory units. Practical skills are seen as an integral accompaniment to theory work. Practical skills will be assessed in AS and in A2 of the Advanced GCE.

WHO CAN DO IT?

Entry requirements: 5 GCSEs (grade A-C) including at least a grade B in Science.

WHAT CAN I GO ON TO DO AFTER THE COURSE?

Successful completion of this course will lead to a qualification that will permit entry into University science courses, appropriate employment within the scientific sector and is a highly valued qualification in other professional areas of employment. Scientists and science qualified candidates are recognized as having a breadth of skills that are transferable within many fields of employment.

AS CHEMISTRY

3

WHAT WILL YOU BE LEARNING?

The Edexcel Advanced Subsidiary GCE and Advanced GCE in Chemistry qualification develops knowledge, understanding and skills related to chemistry. The qualification provides the essential components that ensure that the study of chemistry is present in the National Framework of Qualifications. Students cover the Advanced Subsidiary and the Advanced GCE subject material in compulsory units. Practical skills are seen as an integral part of theory work. Practical skills can be assessed through coursework or through an externally assessed practical examination both in Advanced Subsidiary (AS) and in the second year (A2) of the Advanced GCE. Through this specification students are offered the opportunity not only to study chemistry, but to explore the application of chemistry on a local and global perspective, thus providing the students with a better understanding of chemistry and how it impacts on their lives.

WHO CAN DO IT?

Entry requirements: 5 GCSEs (grade A-C) including at least a grade B in Science.

WHAT CAN I GO ON TO DO AFTER THE COURSE?

Successful completion of this course will lead to a qualification that will permit entry into University science courses, appropriate employment within the scientific sector and is a highly valued qualification in other professional areas of employment. Scientists and science qualified candidates are recognized as having a breadth of skills that are transferable within many fields of employment.

AS PHYSICS

3

WHAT WILL YOU BE LEARNING?

Advanced Subsidiary (AS) and Advanced (A) GCE Physics are level 3 qualifications in the National Qualifications Framework. They serve the needs of a wide range of students as they follow their paths in their individual routes through lifelong learning. The scheme of assessment is in two parts. Three units make up the Advanced Subsidiary (AS) assessment, and a further three (A2) units make up the six units required for Advanced (A) GCE assessment. The three Advanced Subsidiary units together have a weighting of 50% of the Advanced GCE course and the three A2 units together also have a weighting of 50% of the Advanced GCE course. Practical skills are seen as an integral accompaniment to theory work. Practical skills will be assessed in AS and in A2 of the Advanced GCE.

WHO CAN DO IT?

Entry requirements: 5 GCSEs (grade A-C) including at least a grade B in Science.

WHAT CAN I GO ON TO DO AFTER THE COURSE?

Successful completion of this course will lead to a qualification that will permit entry into University science courses, appropriate employment within the scientific sector and is a highly valued qualification in other professional areas of employment. Scientists and science qualified candidates are recognized as having a breadth of skills that are transferable within many fields of employment.



AS DESIGN TECHNOLOGY

3

WHAT WILL YOU BE LEARNING?

This is an exciting course that is a natural follow-on from GCSE Design Technology in resistant materials. It gives students the opportunity to further develop their design and making skills, working with a client and developing a solution to a real design problem. Past projects have included corner cabinet for a T.V., artists' storage box, a device to help change car tyres and a mechanism to help elderly people water hanging baskets.

WHO CAN DO IT?

Entry requirements: 5 GCSEs (grade A-C)

WHAT CAN I GO ON TO DO AFTER THE COURSE?

You could take this course to complement other advanced level courses such as Art and Design and Computing or to prepare for the A2 part of an Advanced GCE in Design and Technology, which could lead onto higher education in areas of and design, technology, architecture or more general higher education courses.

With further training, you could go into a job related to design and technology such as an Architect, Carpenter or Computer Technician. You could also go straight into a job as the AS GCE is a recognised qualification that will encourage you to explore your creative mind and help you develop the basic skills, understanding and knowledge that many employers across lots of industries are looking for.

Level 2 Courses



BTEC FIRST DIPLOMA IN CONSTRUCTION LEVEL 2

2

WHAT WILL YOU BE LEARNING?

This course offers you a specialist qualification for working in areas of construction service. It could lead onto other vocational qualifications such as a BTEC National Certificate or Diploma in Construction or an NVQ or Apprenticeship programmes in Construction Site Supervision, Plastering or Surveying.

With further training, you could go into a job related to construction such as a Construction Labourer, Site Manager or Building Surveyor. The course also provides you with the basic knowledge, understanding and skills that many employers in the construction industry are looking for.

WHO CAN DO IT?

Entry requirements: No formal entry requirements, however all students need to have a keen interest in the subject and have a desire to learn. All students will be interviewed.

WHAT CAN I GO ON TO DO AFTER THE COURSE?

This course offers you a specialist qualification for working in areas of construction. It could lead onto other vocational qualifications such as a BTEC National Certificate or Diploma in Construction.

With further training, you could go into a job related to construction. The course also provides you with the basic knowledge, understanding and skills that many employers are looking for.

CHILD CARE CACHE LEVEL 2 – AWARD/CERTIFICATE/DIPLOMA

2

WHAT WILL YOU BE LEARNING?

This qualification prepares you to work in a supervised capacity, with children and their families in a variety of settings and environments. It gives you the skills and confidence that you need to carry on with further study or step straight into a job. The course explores the development of children from birth to 16. It covers topics like children and play, plus the latest thinking in children's services. It also includes placements in settings such as nurseries that will give you the 'hands-on' experience to help you with your first job. Work is assessed through a variety of methods including multiple-choice question papers, short answer tests, portfolio work, practice evidence records and professional development profiles.

WHO CAN DO IT?

Entry requirements: No formal entry requirements, however all students need to have a keen interest in the subject and have a desire to learn. All students will be interviewed.

WHAT CAN I GO ON TO DO AFTER THE COURSE?

On completing the Level 2 Diploma you could progress to the Level 3 CACHE qualification. You could also find employment as an assistant in a variety of work settings - Nursery; Pre-School; Crèche; Toy Library and take further professional qualifications.



CITY AND GUILDS DIPLOMA IN HAIRDRESSING LEVEL 2

2

WHAT WILL YOU BE LEARNING?

This course leads to careers in commercial hairdressing. The course is a full professional qualification in hairdressing including; advising and consulting clients, shampooing and conditioning hair and scalp, setting hair using drying and setting techniques, permanent waving and neutralising hair, changing hair colour, reception duties, cutting and long hairdressing. You will be assessed by practical and written assessments, coursework and oral questions.

WHO CAN DO IT?

Entry requirements: No formal entry requirements, however all students need to have a keen interest in the subject and have a desire to learn. All students will be interviewed.

WHAT CAN I GO ON TO DO AFTER THE COURSE?

After you have successfully completed this course you can progress onto the higher Hairdressing qualification.

BUSINESS BTEC FIRST DIPLOMA

2

WHAT WILL YOU BE LEARNING?

A BTEC First Diploma is a practical, work-related course. Students learn by completing projects and assignments that are based on realistic workplace situations, activities and demands. You will learn about all aspects of Business, but perhaps more importantly you will begin to understand how organisations operate in the modern world of Business and how individuals operate within the organisations.

You will study units such as:

- * Investigating Business
- * Business communications
- * E-Commerce
- * Customer service
- * Finance for Business
- * People in Business

There are no examinations for this course, so if you like to learn through the assignment approach, this is the course for you.

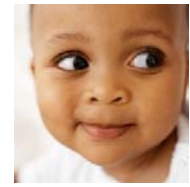
WHO CAN DO IT?

Entry requirements: No formal entry requirements, however all students need to have a keen interest in the subject and have a desire to learn. All students will be interviewed.

WHAT CAN I GO ON TO DO AFTER THE COURSE?

This course is an ideal entry to studying the World of Business. It qualifies students to progress to Nationals in Business or onto GCE "AS" level courses.

BTEC courses are also well recognised by a wide range of Business organisations and therefore students from such courses are well placed to find employment at an introductory level, such as Receptionists, Customer Service Assistants or Finance Juniors.



iMEDIA LEVEL 2 CERTIFICATE

2

WHAT WILL YOU BE LEARNING?

The OCR Level 2 Certificate/Diploma for iMedia Users has been developed in consultation with partners in industry, further education and schools. It will also be suitable for those in full-time education who wish to gain access to the iMedia industry; and those following part-time courses for skill development or recreational purposes. It will be appropriate to those working as, or preparing to work as: web designers, graphic artists, multimedia producers, animators, sound designers and editors, video producers, games designers and story boarders. In order to achieve a Level 2 Certificate, candidates are required to achieve three units, the mandatory unit plus two optional units. The optional units allow candidates to develop skills in a range of different applications. In order to achieve a Level 2 Diploma, candidates are required to achieve five units, the mandatory unit plus four optional units.

WHO CAN DO IT?

No formal entry requirements, however all students will be interviewed. Students with an interest in the subject, who are imaginative, with a flair for design, would be well suited to this course.

WHAT CAN I GO ON TO DO AFTER THE COURSE?

You can progress to a higher level qualification in the subject or further training for a variety of jobs such as web designers, graphic artists, multimedia producers, animators, sound designers and editors, video producers and games designers.

LEVEL 1 CITY & GUILDS – SALON SERVICES, HAIR AND BEAUTY

1

WHAT WILL YOU BE LEARNING?

This course is an introductory into the hairdressing and beauty industry. This course consists of: Shampooing, conditioning and drying hair, contributing to perming and colouring processes, salon reception duties, development of effective working relationships, supporting health and safety make-up and nail art. You will be assessed by practical and written assessments, coursework and oral questions.

WHO CAN DO IT?

Entry requirements: No formal entry requirements, however all students need to have a keen interest in the subject and have a desire to learn. All students will be interviewed.

WHAT CAN I GO ON TO DO AFTER THE COURSE?

After you have successfully completed this course you can progress onto the higher Hairdressing and Beauty qualification.

IMI MOTORCYCLE MAINTENANCE

2

WHAT WILL YOU BE LEARNING?

This course will provide a broad knowledge of both theory and practical aspects of motorcycle maintenance and repair. The course consists of: Carrying out routine vehicle maintenance; removing and replacing engine units and components; chassis units and components and health and safety in the work place. You will be assessed by practical and written assessments and on-line tests.

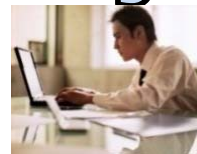
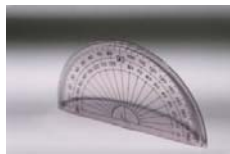
WHO CAN DO IT?

Entry Requirements: 5 D-G Grade GCSE's including English, Maths and Science.

WHAT CAN I GO ON TO DO AFTER THE COURSE?

This short course offers you a specialist qualification for working in areas of vehicle technology. It could lead onto other vocational qualifications such as a BTEC National Certificate or Diploma in Vehicle Repair and Technology. You could also do an NVQ or Apprenticeship programme in Vehicle Maintenance and Repair or Vehicle Fitting Operations. With further training, you could go into a job related to vehicle technology such as a Mechanic or Car Manufacturing Engineer. The course also provides you with the basic knowledge, understanding and skills that many employers in the vehicle trade are looking for. After you have successfully completed this course you can progress onto a Level 3 course or enter full-time employment.

Enrichment Subjects



GCSE SCIENCE

WHAT WILL YOU BE LEARNING?

In this course, science facts and ideas are introduced, which will help candidates to understand the world around them. A range of scientific investigations are planned and carried out and the results analysed. Strong emphasis is placed on the active involvement of candidates in the learning process and the course encourages a wide range of teaching and learning activities. Skills in interpreting scientific information and in communicating scientific ideas are also strongly encouraged and reflected in this course.

WHO CAN DO IT?

Entry requirements: No formal entry requirements, however all students need to have a keen interest in the subject and have a desire to learn. All students will be interviewed.

WHAT CAN I GO ON TO DO AFTER THE COURSE?

You could take this course, which is equivalent to two GCSE's, to prepare for advanced level courses such as an A/AS Level in Science and specialise in one area of science or you may need to strengthen your grades by completing a foundation or intermediate vocational qualification.

With further training, you could go into a job related to science such as a Teacher, Pharmacist or Science Technician.

You could also go straight into employment and do further training or part time study with the support of your employer.

GCSE ENGLISH

WHAT WILL YOU BE LEARNING?

The aim of the course is to develop the use of language, spoken and written. Coursework includes four pieces of work: personal writing (fiction and non-fiction); responses to a Shakespeare play, and one author whose works were published pre 1914. Oral coursework covers a range of speaking and listening activities.

WHO CAN DO IT?

Entry requirements: No formal entry requirements, however all students need to have a keen interest in the subject and have a desire to learn. All students will be interviewed.

WHAT CAN I GO ON TO DO AFTER THE COURSE?

You could take this course to prepare for advanced level courses such as an A/AS Level in English or you may need to strengthen your grades by completing a foundation or intermediate vocational qualification. With further training, you could go into a job related to English such as a Teacher, Journalist or Editor. You could also go straight into employment and do further training or part time study with the support of your employer.

GCSE MATHS

WHAT WILL YOU BE LEARNING?

GCSE Mathematics is a qualification that is demanded by many courses and careers. The course comprises of five areas of study, these include; Using and Applying Mathematics, Number, Algebra, Shape, Space and Measures and Handling Data.

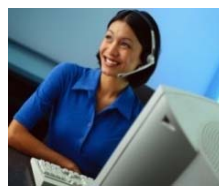
WHO CAN DO IT?

Entry requirements: No formal entry requirements, however all students need to have a keen interest in the subject and have a desire to learn. All students will be interviewed.

WHAT CAN I GO ON TO DO AFTER THE COURSE?

You could take this course to prepare for advanced level courses such as an A/AS Level in Mathematics or Statistics or you may need to strengthen your grades by completing a foundation or intermediate vocational qualification.

With further training, you could go into a job related to mathematics such as an Accountant, Finance Clerk, Teacher or Payroll Officer. You could also go straight into employment and do further training or part time study with the support of your employer.



CLAIT ICT

WHAT WILL YOU BE LEARNING?

CLAiT is a package of computer qualifications which provide a one-stop shop for all students looking to develop, improve or advance their computer skills. This course is ideal for anyone following BTEC Business, but may also fit in with other level 2 courses on offer, or even some AS Level courses.

WHO CAN DO IT?

Entry requirements: No formal entry requirements, however all students need to have a keen interest in the subject and have a desire to learn. All students will be interviewed.

WHAT CAN I GO ON TO DO AFTER THE COURSE?

You can progress to a level 3 course such as a BTEC National or employment.